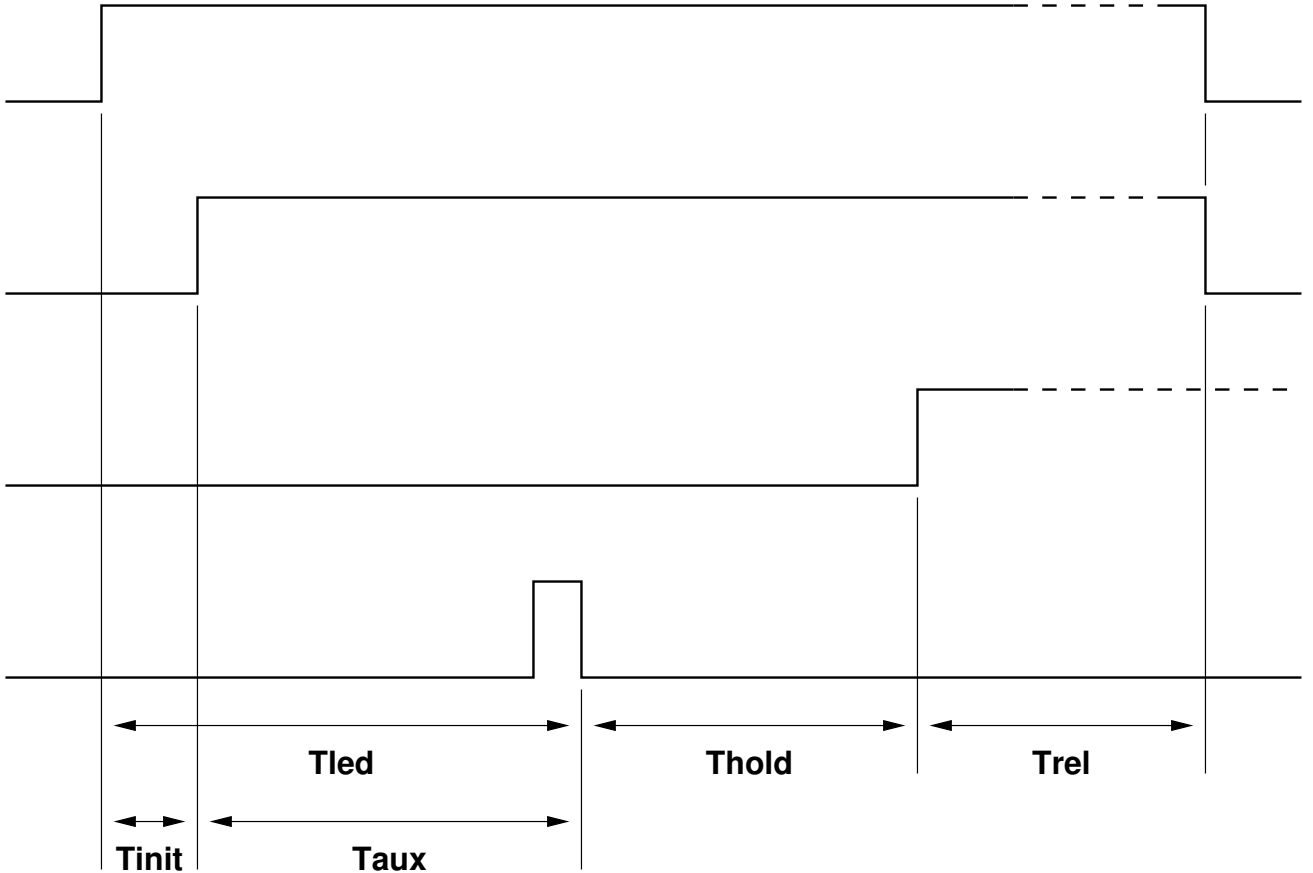


POWER

AUX

LCM

LED



$\sim 100\text{ms} \leq T_{\text{init}} \leq T_{\text{led}}$
 $T_{\text{aux}} > 0\text{s}$

$T_{\text{led}} = \sim 2\text{s}$
 $T_{\text{hold}} = \sim 1-2\text{s}$
 $T_{\text{rel}} \geq 0\text{s}$